

(5)

جرقیل ۱۲۰ تن تالارو

TRUCK CRANE**TG-1200M***JAPANESE SPECIFICATIONS*

CARRIER MODEL	OUTLINE	SPEC. NO.
MITSUBISHI P-K1500	3-stage Luffing Jib	TG-1200M-2-20101

Control No. JA-02

IG-1200M 定格荷重表

○アウトリガ最大張出 + フロントジャッキ
 + リヤジャッキ
 ○アウトリガ最大張出 (全周)
 (側方)

長さ 作業半径 (m)	12.0 m	17.7 m	23.4 m	29.1 m	34.8 m	42.4 m	50.0 m
3.2	120.0	50.0					
4.0	105.0	50.0					
4.5	92.0	50.0	40.0				
5.0	82.0	50.0	40.0				
5.5	73.0	50.0	40.0				
6.0	66.0	50.0	40.0	32.0			
6.5	60.0	50.0	40.0	32.0	25.0		
7.0	55.0	50.0	40.0	32.0	25.0	16.5	
7.5	51.0	47.0	40.0	32.0	25.0	16.5	
8.0	47.0	44.5	40.0	32.0	25.0	16.5	
8.5	43.5	42.5	38.5	32.0	25.0	16.5	
9.0	40.0	40.0	36.5	30.7	25.0	16.5	
10.0	35.0	36.0	33.5	27.8	25.0	16.5	14.0
11.0		32.8	30.9	25.4	23.0	16.5	14.0
12.0		30.0	28.7	23.3	21.0	16.5	14.0
14.0		25.5	24.3	19.7	17.6	16.5	12.6
16.0		20.5	20.5	17.0	15.1	14.0	11.5
18.0			17.0	14.9	12.9	12.1	10.5
20.0				13.5	11.1	10.6	9.5
22.0					11.6	9.5	8.6
24.0					9.5	8.1	8.2
26.0					7.5	6.8	7.2
28.0						5.6	6.3
30.0						4.5	5.5
32.0						3.4	4.8
34.0							4.2
36.0							3.6
38.0							3.0
40.0							3.4
42.0							3.0

○アウトリガ最大張出 + フロントジャッキ + リヤジャッキ (全周)
 ○アウトリガ最大張出 (側方)

ジャッキ長さ	6.25m + 12.75m										6.25m + 19.75m					
	0°	5°	15°	25°	35°	45°	50°	5°	15°	25°	35°	45°				
アウトセット	0°	5°	15°	25°	35°	45°	50°	5°	15°	25°	35°	45°				
作業半径 (m)	R	R	R	R	R	R	R	R	R	R	R	R				
角度 (°)	R	R	R	R	R	R	R	R	R	R	R	R				
80	105.60	133.40	156.35	176.31	193.28	205.24	210.22	155.28	191.28	220.21	244.18	265.14				
79	117.60	146.38	169.35	189.30	204.27	217.23	222.22	170.28	205.27	233.20	257.16	277.13				
78	128.60	159.37	182.35	200.30	216.26	228.23	233.21	184.28	218.26	245.19	269.15	288.13				
77	139.60	172.37	194.35	212.30	227.25	239.22	244.21	199.28	232.25	259.19	282.15	300.13				
75	161.58	198.37	219.33	237.27	250.23	265.21	266.20	227.28	268.25	298.18	325.15	344.13				
72	193.51	234.32	254.27	270.23	284.20	293.18	293.18	298.17	267.24	296.18	321.15	342.13				
70	214.47	257.28	277.24	293.20	305.18	315.17	318.16	293.21	321.24	296.18	321.15	342.13				
68	235.42	280.25	300.21	314.18	326.16	335.15	338.14	318.18	345.15	316.16	345.13	365.12				
65	265.34	314.21	333.18	346.16	357.15	365.14	367.13	345.18	372.15	345.15	372.13	392.12				
62	294.27	347.18	363.16	376.13	386.12	393.11	395.10	372.18	400.15	372.13	400.11	420.09				
60	312.24	367.18	383.14	396.12	405.11	411.10	412.09	395.12	420.11	395.10	420.08	440.07				
58	330.21	387.17	403.12	414.11	423.10	429.09	430.08	412.11	437.09	412.09	437.07	457.06				
55	357.17	417.11	431.10	442.09	450.08	454.07	455.06	435.10	464.07	435.08	464.05	484.04				
52	381.13	442.07	456.07	467.07	473.06	476.05	477.04	464.09	493.06	464.05	493.03	513.02				
50	396.09							495.05	517.06	495.04	517.04	537.03				
48	411.06															

(R: 作業半径)

IG-1200M 定格総荷重表

○アウトリガ最大張出+フロントジャッキ
 +リヤジャッキ
 ○アウトリガ最大張出 (全周)
 (側方)

アーム 長さ (m)	12.0 m	17.7 m	23.4 m	29.1 m	34.8 m	42.4 m	50.0 m
3.2	1200	50.0					
4.0	105.0	50.0					
4.5	92.0	50.0	40.0				
5.0	82.0	50.0	40.0				
5.5	73.0	50.0	40.0				
6.0	66.0	50.0	40.0	32.0			
6.5	60.0	50.0	40.0	32.0	25.0		
7.0	55.0	50.0	40.0	32.0	25.0	16.5	
7.5	51.0	47.0	40.0	32.0	25.0	16.5	
8.0	47.0	44.5	40.0	32.0	25.0	16.5	
8.5	43.5	42.5	38.5	32.0	25.0	16.5	
9.0	40.0	40.0	36.5	30.7	25.0	16.5	
10.0	35.0	36.0	33.5	27.8	25.0	16.5	14.0
11.0		32.8	30.9	25.4	23.0	16.5	14.0
12.0		30.0	28.7	23.3	21.0	16.5	14.0
14.0		25.5	24.3	19.7	17.6	16.5	12.6
16.0		20.5	20.5	17.0	15.1	14.0	11.5
18.0			17.0	14.9	12.9	12.1	10.5
20.0				13.2	11.1	10.6	9.5
22.0				11.6	9.5	9.3	8.6
24.0				9.5	8.1	8.2	7.7
26.0				7.5	6.8	7.2	7.0
28.0					5.6	6.3	6.1
30.0					4.5	5.5	5.5
32.0					3.4	4.8	4.8
34.0						4.2	4.3
36.0						3.6	3.8
38.0						3.0	3.4
40.0							3.0
42.0							

○アウトリガ最大張出+フロントジャッキ+リヤジャッキ(全周)
 ○アウトリガ最大張出(側方)

アーム 長さ (m)	6.25m + 12.75m						6.25m + 19.75m																	
	0°	5°	15°	25°	35°	45°	5°	15°	25°	35°	45°													
78	12.8	6.0	15.9	3.75	18.2	3.5	20.0	3.0	21.6	2.6	22.8	2.3	23.3	2.15	18.4	2.8	21.8	2.6	24.6	1.95	26.9	1.5	28.8	1.3
77	13.9	6.0	17.2	3.75	19.4	3.5	21.2	3.0	22.7	2.5	23.9	2.2	24.4	2.1	19.9	2.8	23.2	2.5	25.9	1.9	28.2	1.5	30.0	1.3
75	16.1	5.8	19.8	3.75	21.9	3.3	23.7	2.75	25.0	2.35	26.1	2.1	26.6	2.0	22.7	2.8	25.8	2.25	28.4	1.8	30.6	1.5	32.4	1.3
72	19.3	5.1	23.4	3.2	25.4	2.75	27.0	2.35	28.4	2.0	29.3	1.8	29.8	1.7	26.7	2.4	28.6	1.8	32.1	1.55	34.2	1.3	35.8	1.15
70	21.4	4.7	25.7	2.85	27.7	2.4	29.3	2.05	30.5	1.8	31.5	1.7	31.8	1.6	29.3	2.1	32.1	1.6	34.5	1.35	36.5	1.2	38.0	1.05
68	23.5	4.2	28.0	2.5	30.0	2.1	31.4	1.85	32.6	1.65	33.5	1.55	33.8	1.45	31.8	1.8	34.5	1.45	36.9	1.2	38.8	1.05	40.1	0.95
65	26.5	3.4	31.4	2.15	33.2	1.8	34.6	1.6	35.7	1.45	36.5	1.35	36.7	1.25	35.5	1.5	38.1	1.2	40.3	1.0	42.0	0.9	43.2	0.8
62	29.4	2.75	34.7	1.8	36.3	1.6	37.6	1.3	38.6	1.25	39.3	1.2	39.5	1.05	39.0	1.2	41.5	1.0	43.6	0.9	45.1	0.8	46.1	0.7
60	31.2	2.4	36.7	1.55	38.3	1.4	39.6	1.2	40.5	1.15	41.1	1.1	41.2	0.95	41.3	1.1	43.7	0.9	45.7	0.8	47.1	0.7	48.0	0.65
58	33.0	2.1	38.7	1.35	40.3	1.2	41.4	1.1	42.3	1.0	42.9	0.95	43.0	0.85	43.5	1.0	45.8	0.8	47.7	0.7	49.0	0.6	49.8	0.6
55	35.7	1.7	41.7	1.1	43.1	1.0	44.2	0.9	45.0	0.85	45.4	0.85			46.4	0.75	48.7	0.7	50.5	0.6	51.6	0.5	52.2	0.5
52	38.1	1.3	44.2	0.7	45.6	0.7	46.7	0.7	47.3	0.65	47.6	0.65			49.5	0.65	51.7	0.6	53.3	0.5	54.2	0.4	54.7	0.4
50	39.6	0.9																						
48	41.1	0.6																						

(R: 作業半径)

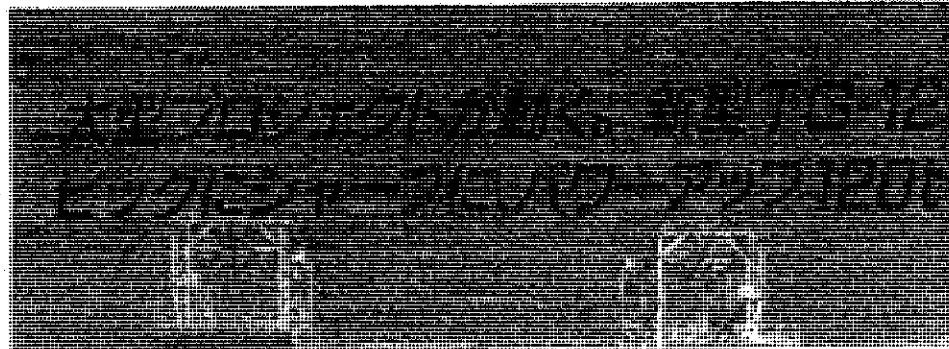
1382

Hydro-Crane-Club

Cranes Operator Ice Man



TADANO
TG-12

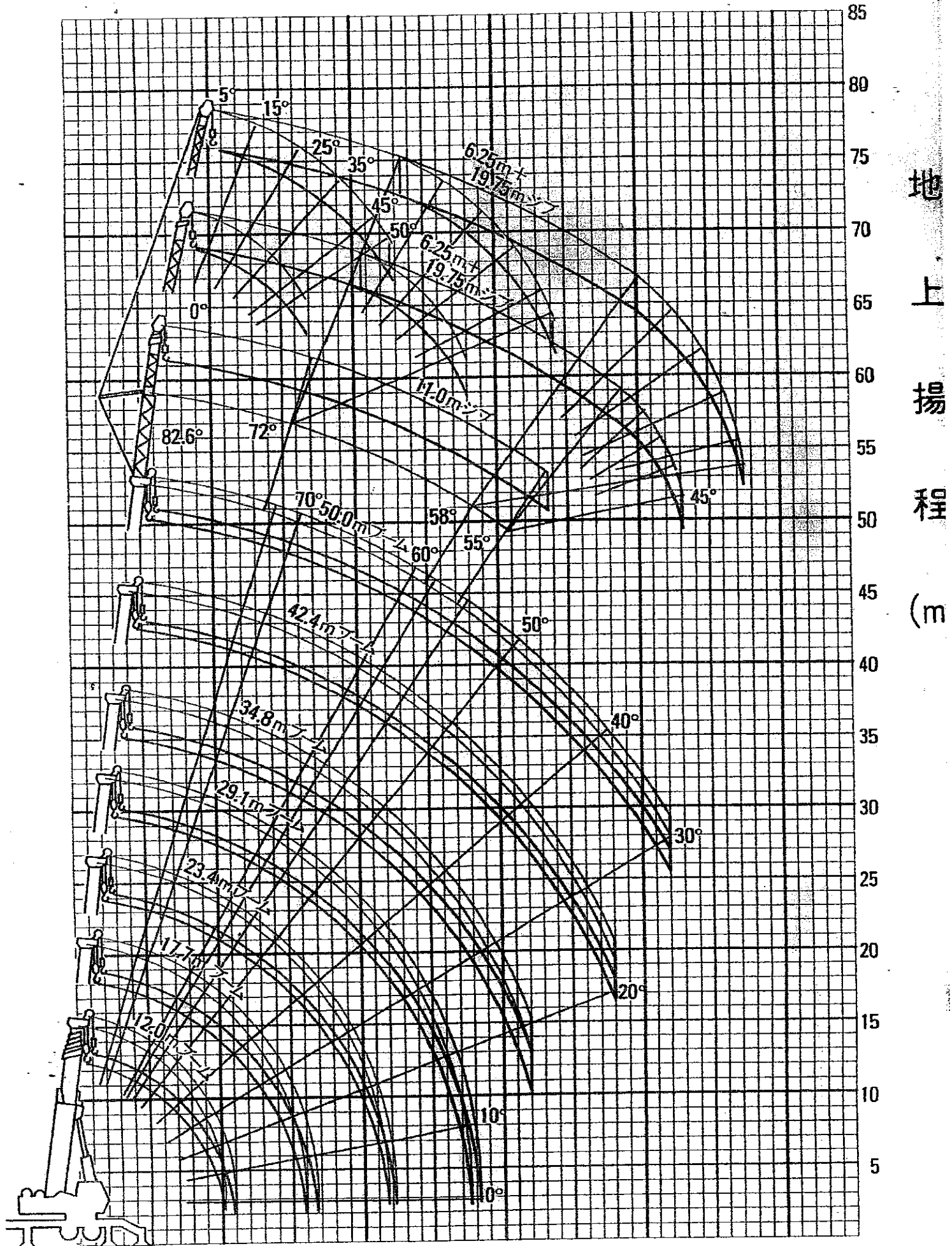


DDMが動く
吊り

<http://www.hydro-crane.com/tg-1200m.htm>

18/03/1382

TG-1200M 作業半径 - 揚程図



地
上
揚
程
(m)